

MODEL NUMBER:

☐ 1662SG.223 Commercial Shower System Kit

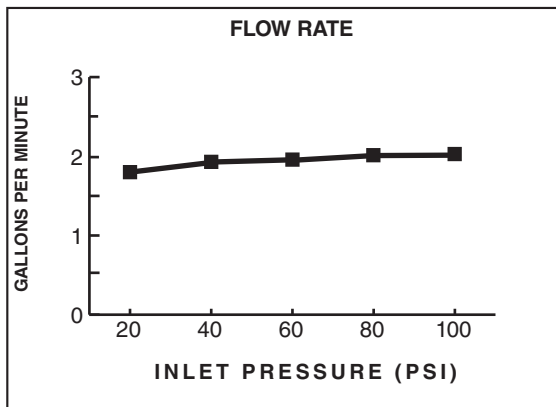
Includes:

• Universal pressure balance Shower Valve with screwdriver stops	R121SS
• Colony Soft Shower Only Trim	T675.501.002
• 3-Function Hand Shower with Pause Feature	1660.767.002
• In-Line Vacuum Breaker	1660.400.002
• Metal Hose	8888.035.002
• Wall Supply	8888.037.002
• 36" Slide-Grab Bar	1660.236.002
• 2-Way Diverter Valve	R422
• Heritage Diverter Handle	T342.430

GENERAL DESCRIPTION:

Complete commercial shower system includes: an R121SS pressure balance valve and trim, a wall supply with 1/2" NPT female inlet and 1/2" NPSM male outlet, a 59" (1500 mm) metal shower hose, vacuum breaker, a 3-function hand shower with pause feature, 2-way diverter valve, showerhead and a 36" slide-grab bar.

Valve features a cast brass body, washerless 47 mm ceramic disc valve cartridge with volume and temperature control, back-to-back capability, integrated check valves and hot limit safety stop. Pressure balancing cartridge maintains constant output temperature in response to changes in relative hot and cold supply pressure. Universal inlets/outlets. With screwdriver stops. Rough-in plaster guard designed for use as thin wall mounting adapter. Durable metal handle. 3-function water saving hand shower with pause feature and 1.5 gpm/5.7 L/min. flow restrictor. Slide bar features an adjustable hand shower holder which can be set at any height or position along the bar and angle up to 45°.



PRODUCT FEATURES:

VALVE:

Universal Inlets / Outlets: 1/2" NOM Copper Sweat or 1/2" NPT.

Cast Brass Valve Body: Durable. Ideal material for prolonged contact with water.

Ceramic Disc Valve Cartridge: Assures a lifetime of drip-free performance. Allows easy control over both water temperature and volume.

Pressure Balancing Valve Cartridge: Maintains constant output temperature in response to changes in relative hot and cold supply pressure. Diaphragm system with integrated check valves engineered to eliminate cross flow. Avoids failure due to mineral deposits - ideal for use in hard water.

Back-to-Back Capability: Hot and cold can be reversed quickly and easily.

Adjustable Hot Limit Safety Stop: Limits the amount of hot water allowed to mix with cold. Reduces the risk of accidental scalding.

Exclusive Plaster Guard: Plaster guard is designed to protect valve during installation and serve as a mounting plate for thin-wall installations. Two-piece design allows valve to be tested prior to trim installation.

Wide Rough-in Range: From 1-5/8" to 3-1/4".

PERSONAL SHOWER:

ADA-Compliant: Non-positive shut-off button on handle reduces flow to a trickle.

SLIDE-GRAB BAR:

Stronger Than Standard Slide Bars: 1-1/2" diameter stainless steel bar meets ANSI standard 250 lb. pull test. Chrome-plated hand shower holder with ADA compliant lever handle.

SUGGESTED SPECIFICATION

Shower system shall feature a wall supply with 1/2" NPT female inlets and 1/2" NPSM male outlet, 59" metal hose, vacuum breaker, 2.5 gpm/9.5 L/min. 3-function hand shower with pause feature, 2-way diverter valve, showerhead and a 36" slide-grab bar. Pressure Balance valve shall feature a cast brass body. Shall feature ceramic disc valve cartridge which controls water temperature and volume. Shall also feature hot limit safety stop. Fitting shall be American Standard Model # 1662SG.223.002.

CODES AND STANDARDS

These products meet or exceed the following codes and standards:

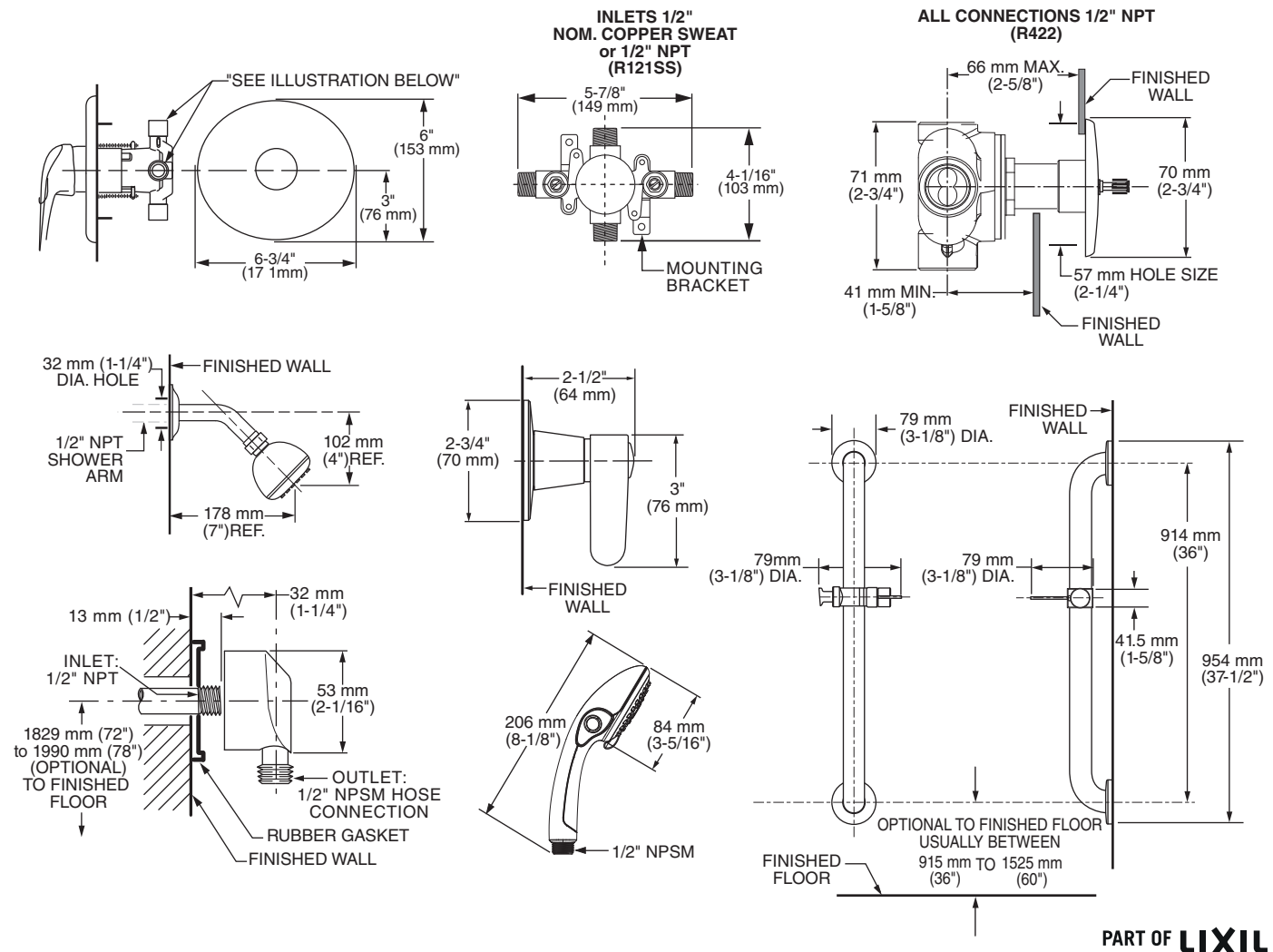
ASME A112.18.1

ASSE 1016

CSA B 125

ANSI A117.1

Product Number	Description	Finish
		Polished Chrome
		002
1662SG.223	Commercial Shower System Kit. Contains pressure balance valve with volume and temperature control, trim kit, 3-function hand shower with pause feature, metal hose, vacuum breaker, wall supply, 2-way diverter, showerhead and 36" slide-grab bar. 2.5 gpm/9.5 L/min.	



PART OF **LIXIL**